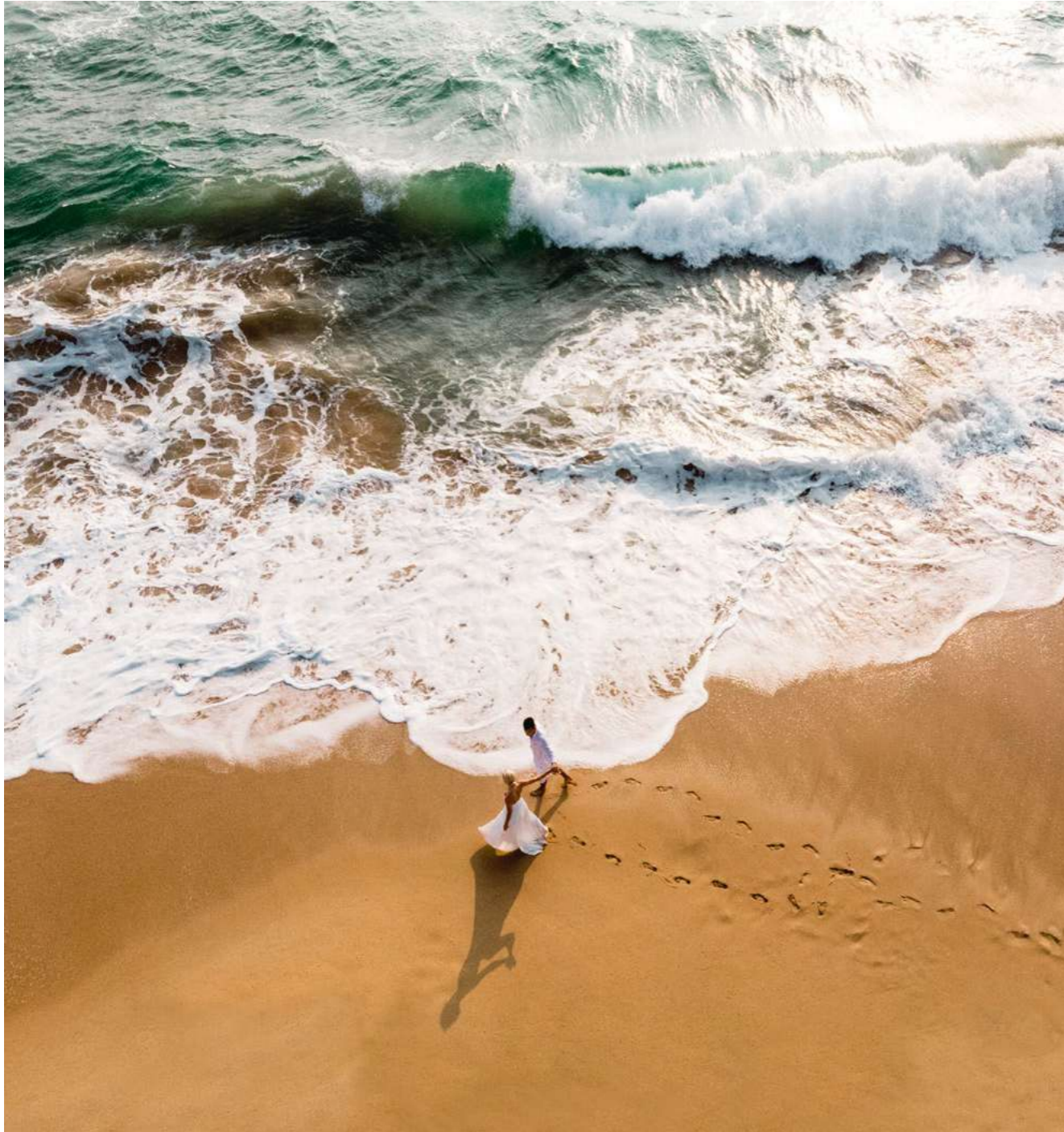




شجرة الحياة

TREE OF LIFE

DUBAI



ENERGY

YOUTHFULNESS

WELL-BEING

ANCIENT KNOWLEDGE

Eywa in Sanskrit means “Sacred Love”

EUROPEAN BOUTIQUE REAL ESTATE DEVELOPER

# R•EVOLUTION

YEARS OF EXPERIENCE

26

PROJECTS COMPLETED

23



## About The Developer

# BUILDING DIFFERENTLY LIVING MEANINGFULLY

R.Evolution is an international luxury developer that fuses regenerative architecture with conscious living. Founded in Europe with a presence across Latvia, Germany, Spain and the UAE, R.Evolution is driven by a singular belief: that real estate should improve life — not just reflect it.

The company's developments are known for their bold design language, longevity-focused systems, and integration of art, science, and sustainability.

With Eywa, R.Evolution introduces a new benchmark for future-forward living in the UAE — one that bridges ancient intelligence and modern wellness, while delivering lasting value to both resident and environment.

To us, buildings aren't structures. They are experiences — designed to hold, heal, and endure.



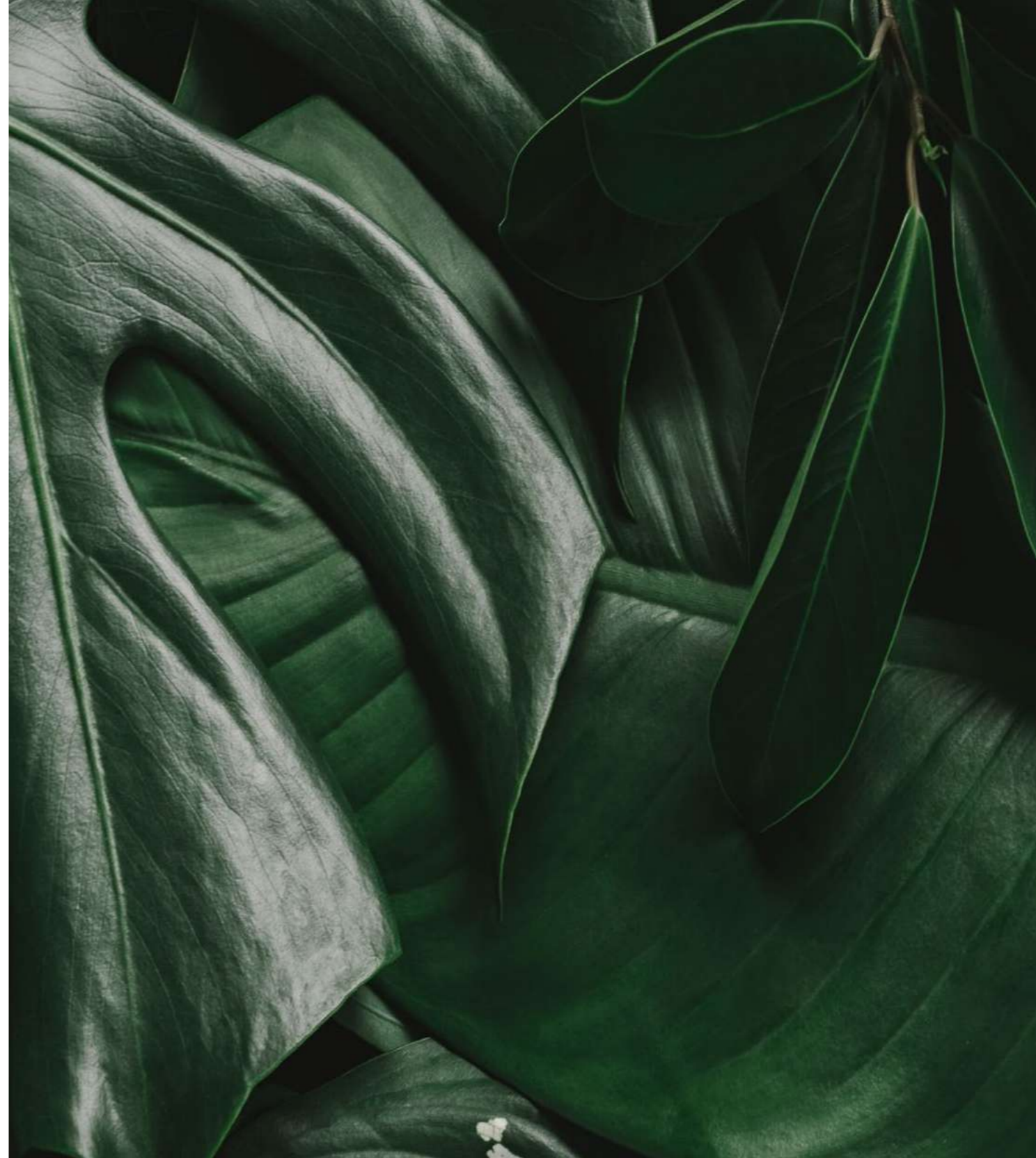




## EYWA BRAND

Eywa is a global brand setting new standards for eco-friendly and sustainable living, focused on improving health and well-being. It caters to the needs of affluent individuals for a successful and prosperous life.

At Eywa, buildings are viewed as an ecosystem that integrates humanity's knowledge about creating spaces that harmonize all aspects and levels of human life. It embodies the essence of service, the finest quality architecture and design, combined with the implementation of ancient wisdom about humans and the latest technologies that influence the health of the body, mind, and soul.



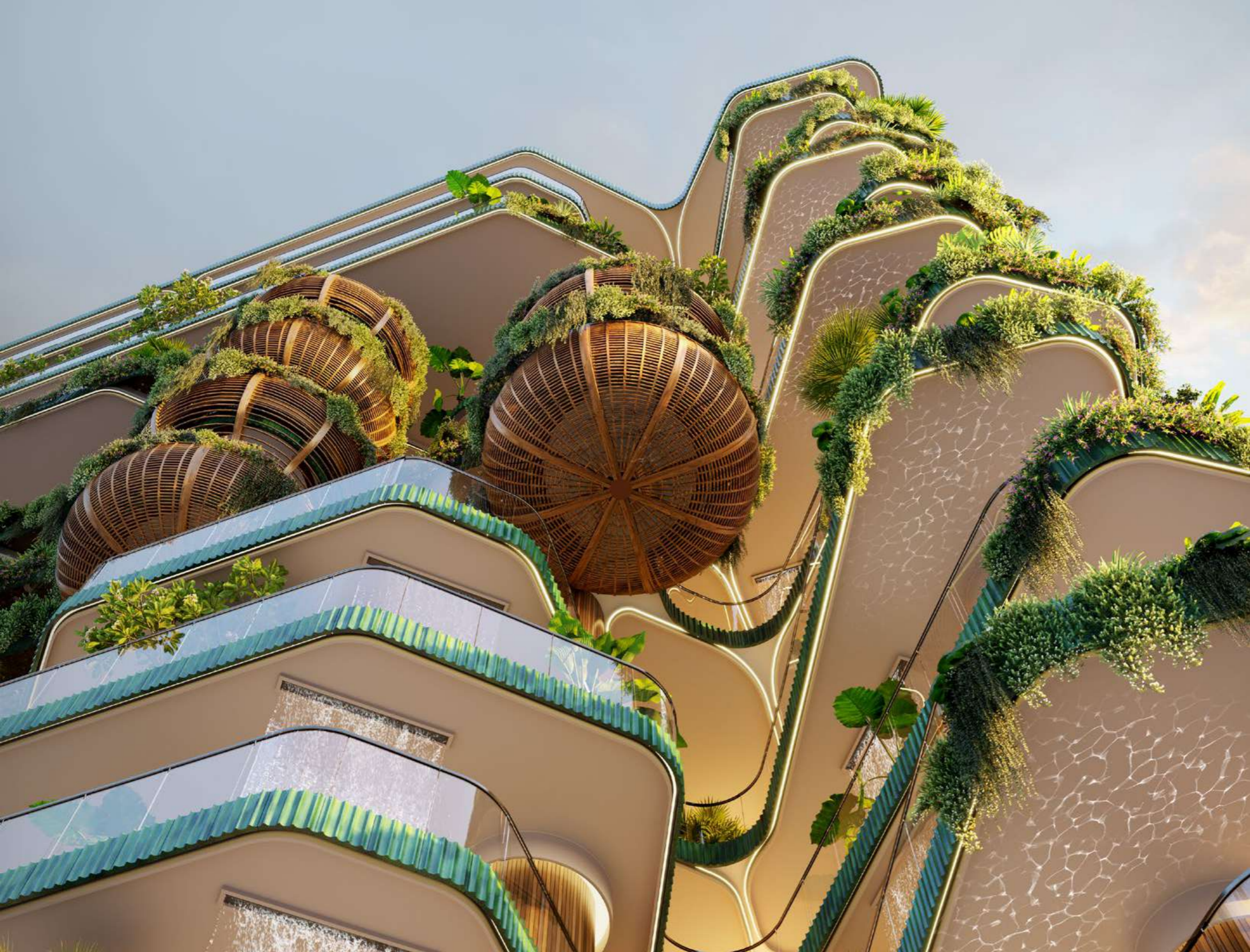


52

ULTRA LUXURY  
WATERFRONT  
RESIDENCES  
INCLUDING

2

PENTHOUSES



# الحياة

TREE OF LIFE  
DUBAI





Location

# THE PERFECT WELLNESS LOCATION

Situated right on the largest lagoon of the Dubai Canal, Eywa offers a peaceful retreat away from noisy streets and traffic.

Surrounded by five-star hotels and exquisite residential developments, as well as a vibrant array of luxury restaurants and amenities, Eywa is perfectly positioned for those who seek tranquility without sacrificing convenience.





EYWA TREE OF LIFE ●

● EYWA WAY OF WATER

CANAL-FRONT LOCATION, MARASI DRIVE (BILLIONAIRE ST.)



*Experience the beauty and serenity of Eywa  
— where luxury living harmonizes with the calm of nature.*





*The Eywa promise: elegance, calm, and a life beautifully lived.*



## Architecture & Design

Welcome to Eywa, where luxury living meets holistic well-being. In the heart of Dubai, our exclusive community redefines opulence by integrating wellth—an unparalleled blend of wellness and wealth.

Indulge in elegantly designed apartments featuring state-of-the-art wellness amenities, including a tranquil spa, a fully equipped fitness center and serene meditation crystal gardens. Each space is crafted not just for comfort, but for a lifestyle that prioritizes your health and happiness.

At R.Evolution, we believe that true luxury is not just about material wealth; it's about cultivating a life of balance, fulfillment, and well-being.

Join us in embracing a new standard of living that celebrates both your health and your lifestyle!

# TREE OF LIFE

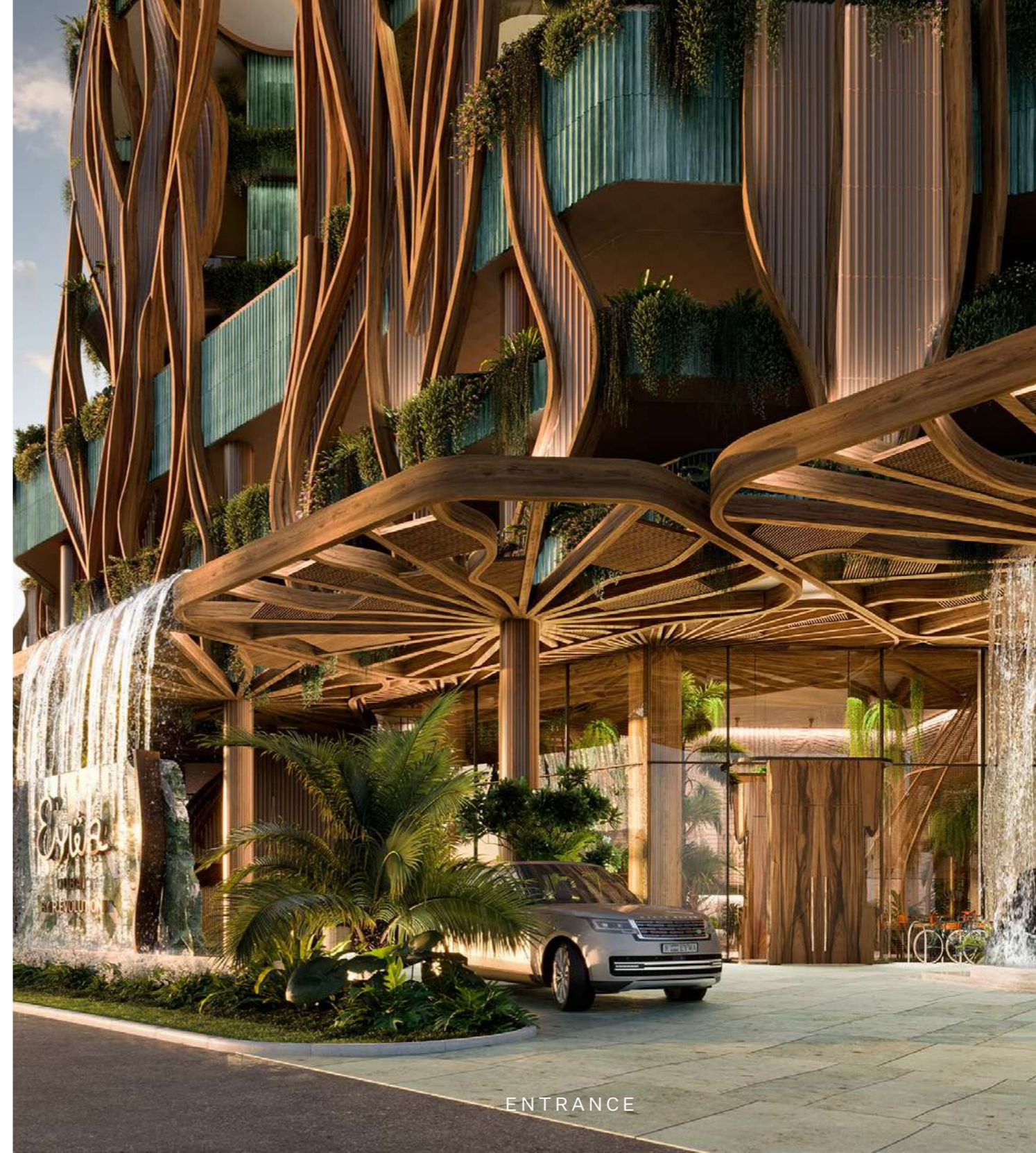
Strikingly unique from your very first glimpse, Eywa instantly evokes a glorious Tree of Life. An organic canopy of branches, an enticing weave of roots, a living breathing building that represents timeless wisdom and enduring growth.

Open round columns, intertwining branches and trunks personify the Banyan tree, the Tree of Life, whose branches support our world and whose roots spread down into the underworld, a symbol of the constantly renewing and reviving world, an inexhaustible source of life.

*Architecture & Design: OAD (EU)*

*Lead Design Consultants: BSBG (UAE)*

*Interior Design: OAD (EU)*





PODIUM LEVEL FACADE



# CERTIFICATIONS

Confirmed by the World Leading Independent Institutions.

**LEED Platinum** - the highest sustainable quality materials and technical solutions used in the building development.

**WELL Platinum** - a beneficial impact on your health: both mental and physical well-being and longevity.

**WiredScore Platinum** - superior digital connectivity, reliable high-speed internet, and future-proof infrastructure for a seamless living and working experience.





# ENTRANCE & GROUND FLOOR



## Private Valet & Drop-Off



## Concierge Service

12/7 Health & Longevity Concierge  
24/7 Resident Concierge



## Private Service Entrance



## Outdoor Lounge

Seating  
Waterfalls



## Double Height

Lobby  
Library  
Teahouse Nest  
Lounge Seating



## ASG Network Hub

It is a system that integrates multiple technologies and services to enhance the functionality, security, and efficiency of the building environment.



## The Most Advanced Science & Technology

Sound Vibration Harmonised Living Water  
Air Purification & Ionisation (MERV14)  
AI in Management & Wellness  
Non-Toxic, Eco-Friendly Materials  
EMF Protection  
Materials' Radioactivity Inspection  
Mold & Fungi Protection



مكتبة  
DUBAI

THE LOBBY LIBRARY

# WELL-BEING THRIVES ON HARMONY

## The Lobby

Often called the tree of knowledge and wisdom, the banyan tree represents growth, strength and self-awareness.

Step between the trunks of our tree, and you'll discover how Eywa celebrates, shares and nurtures knowledge.

Nestled there, within our main hall, is a community library. This features a lovingly curated collection of more than 2500 books, including a range of books from a wealth of international philosophers.





THE LOBBY FIREPLACE

## The Community Spaces

Achieving a healthy work/life balance is essential for overall well-being. At our facility, we prioritize this harmony by offering versatile spaces designed to meet your needs. On the Amenities floor, you'll find private dining rooms that can easily be converted into offices or meeting rooms, providing the perfect environment for both collaboration and relaxation. Embrace a workspace that promotes balance and enhances productivity.



# THE AMENITIES

State-of-the-art Amenity Floor | 15,000 + ft<sup>2</sup> | 20+ Premium Features



*At its heart, Eywa Tree of Life is more than architecture; it is a philosophy. A philosophy of elegant living that honors nature, curates well-being, and reveals the boundless potential of human vitality.*

*It invites you to dive into the abundance of possibility, to connect with your true essence, and to embark on a transformative journey toward a life that's harmoniously refined and deeply enriched.*

# PUBLIC SPACES & AMENITIES



**3 Swimming Pools**



**Fitness & Wellness Studio**



**Exclusive Clubhouse**

Business & Leisure Lounge  
Library  
Music Lounge  
Private Dining  
Private Event Space



**Crystal Garden**



**Wellness Spa Retreat**

Sauna  
Hammam  
Cold Plunge Pool  
Experience Showers  
Faradey Mesh Cave



**Pool Deck & 2 Health Bar**



**Children's Activity Center**

(Indoor & Outdoor)



**Sound Vibration  
Harmonised Living Water**

# LONGEVITY & WELL-BEING AS A LIFESTYLE PILLAR

Eywa isn't just luxury living; it's a framework for vitality, a cradle of luxury where health metrics inform every choice, and premium experiences support a vibrant future: an integrated holistic well-being ecosystem—from spa to suite, exceptional spaces, expert guidance, and daily practices that sustain vitality and are guided by science and luxury.





THE AMENITIES



## The Amenities

# THE BEAUTY OF BEING & THE FREEDOM OF CHOICE

The choice is yours—there is no call to abandon your habits or rituals. Instead, we believe that rituals are the quiet anchors of mindfulness, weaving deeper connections with those we cherish. They are the sacred moments that linger in our memories, moments of meaning that we will never tire of revisiting. Let's enrich our lives by infusing each day with intention and soulfulness.

We offer you a gentle path to enhance your lifespan, healthspan, and wealthspan, guided by the finest technologies and scientific breakthroughs in the art of longevity today.

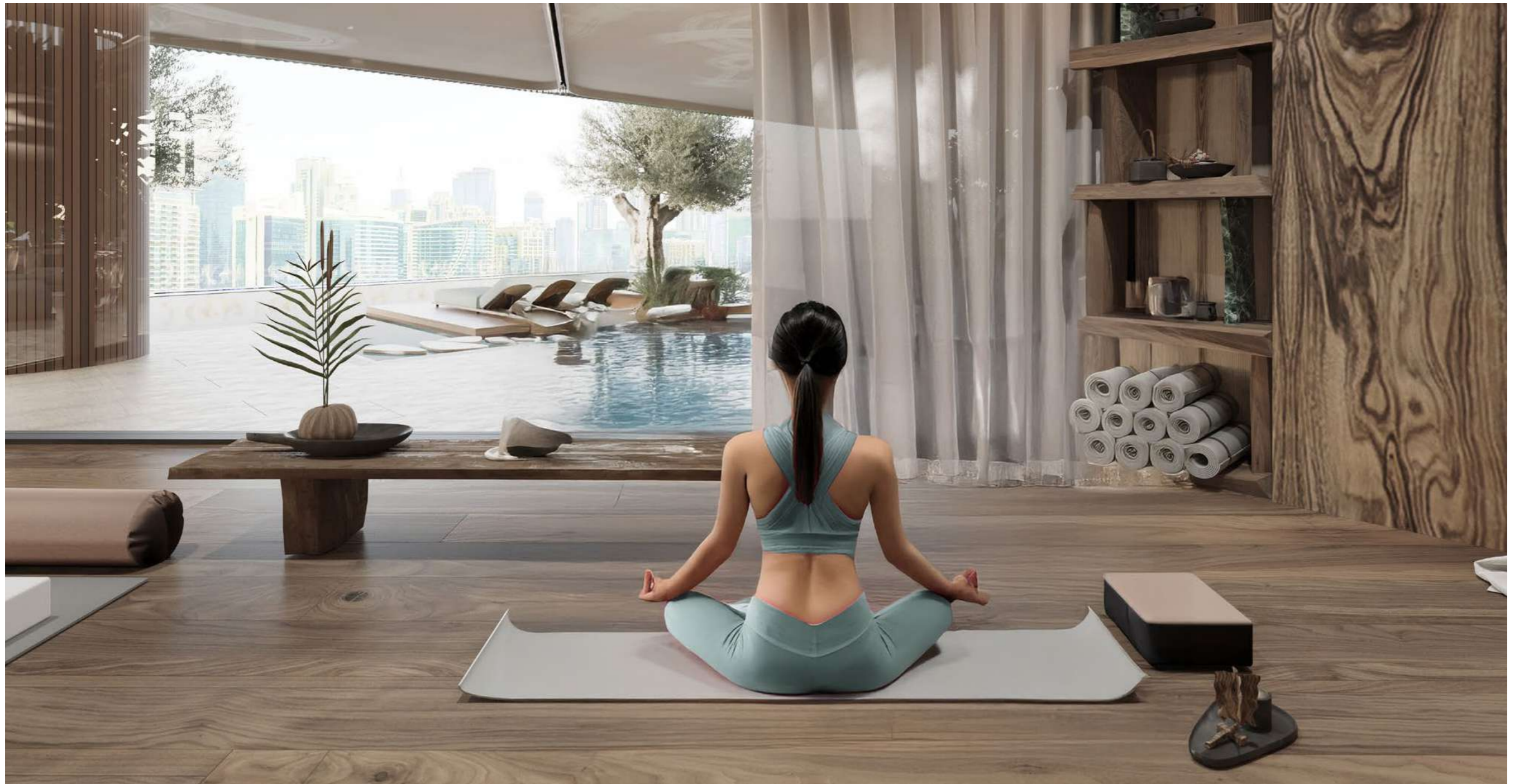


*Opulent spa experiences that harmonize restorative science with timeless elegance.*

*A sanctuary designed for longevity*



RELAXATION AREA



YOGA ROOM



*A holistic fitness haven: performance studios, mindful movement, and programs tailored to longevity.*

GYM



CRYSTAL GARDEN



CLUBHOUSE RESTAURANT



# RESIDENCES

2  
Bedroom  
from 2,981 ft<sup>2</sup>

3  
Bedroom  
from 5,136 ft<sup>2</sup>

4  
Bedroom  
from 6,152 ft<sup>2</sup>

5  
Bedroom  
from 8,830 ft<sup>2</sup>

Penthouse  
15,804 ft<sup>2</sup>



RESIDENCE TERRACE

The Residences

# EYWA BRANDED RESIDENCES

**Only 52 residences including 2 Penthouses** are thoughtfully designed and fully finished with the finest, sustainable, and non-toxic materials, ensuring a healthy and environmentally conscious living environment. They include integrated EMF (Electromagnetic Field) protection and are meticulously processed during construction to prevent mold and fungi, promoting long-term durability and well-being.



APARTMENT TERRACE



APARTMENT LOBBY

## The Residences

Australian Paldao veneer doors with hidden hinges introduce a refined opulence to your residence.

The show kitchens boast premium Australian Paldao cabinetry, equipped with top-of-the-line appliances from Miele, Liebherr and Bosch, including a secondary kitchen for 3-4-5-bedroom apartments.

Smart Home technology seamlessly integrates all systems for effortless control and comfort.

**Miele**

**BOSCH**

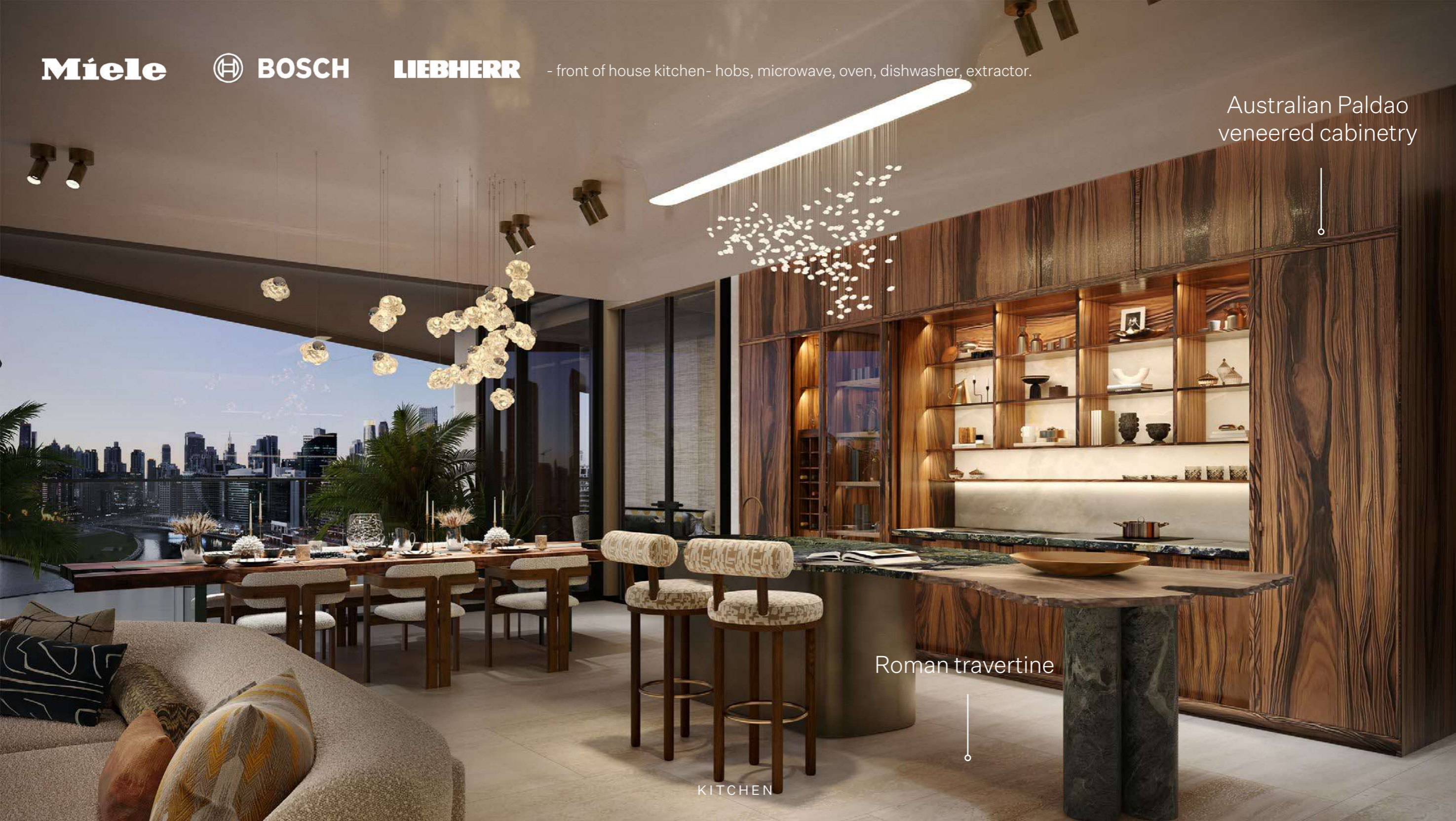
**LIEBHERR**

- front of house kitchen- hobs, microwave, oven, dishwasher, extractor.

Australian Paldao  
veneered cabinetry

Roman travertine

KITCHEN





Roman travertine

LIVING ROOM



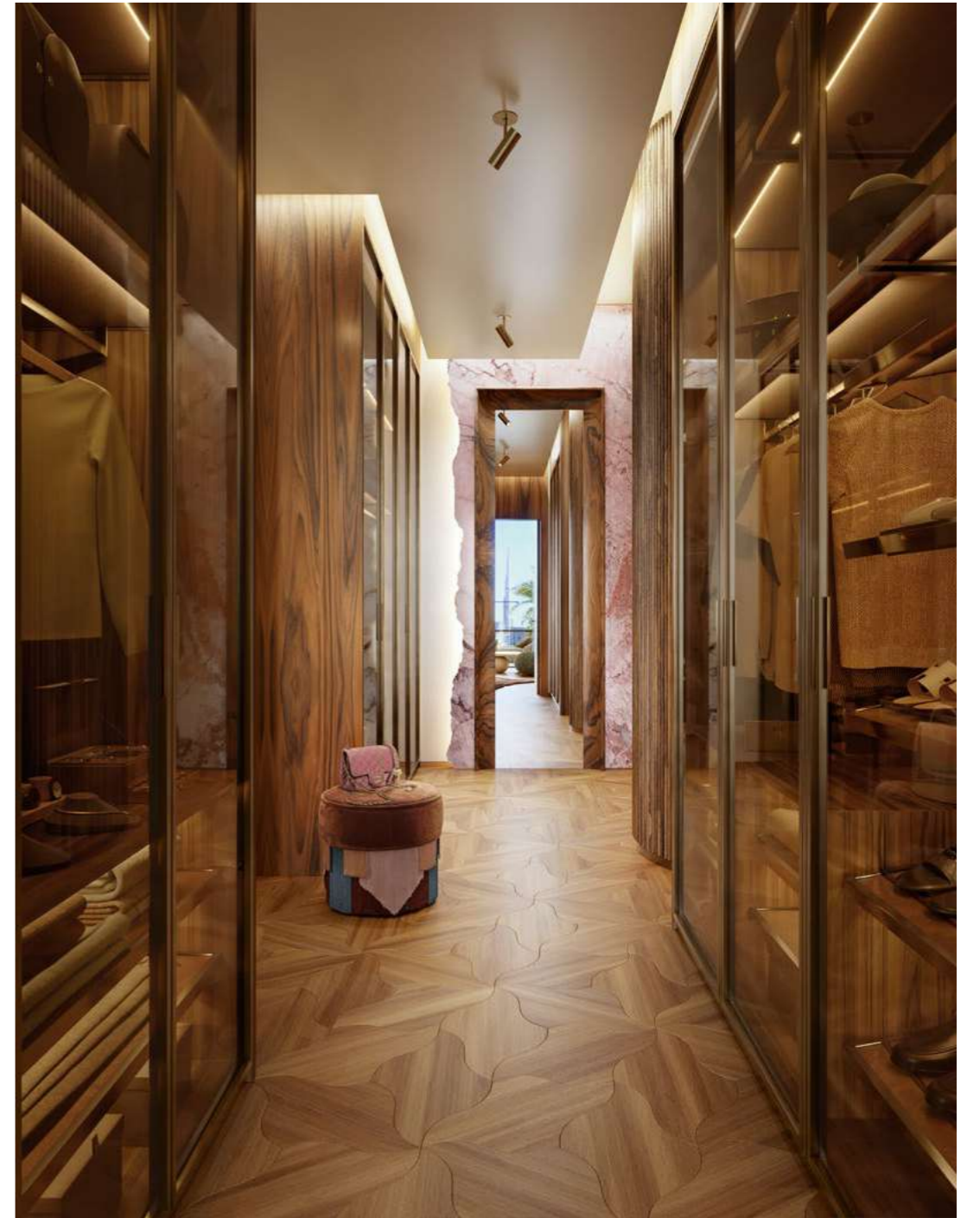
Australian Paldao  
veneered doors  
with hidden hinges

Multilayer oak parquet

BEDROOM



DRESSING ROOM



DRESSING ROOM



Green Patagonia,  
marble slab, leather finish

Roman travertine

BATHROOM



RESIDENCE TERRACE





PENTHOUSE DINNING AREA



PENTHOUSE LIVING ROOM



PENTHOUSE BATHROOM



PENTHOUSE BEDROOM



PENTHOUSE TERRACE



# EYWA HOLISTIC WELL-BEING LONGEVITY ECOSYSTEM

## ARCHITECTURE & DESIGN

- Storytelling and decoding nature, culture, and traditions in the language of architecture and design
- Neuroarchitecture and biophilia
- Longevity and durability of buildings and building materials
- Regeneration strategy for people and the planet

## SERVICE & MANAGEMENT

- 5-star hospitality and tailored “Wild Luxury” service
- Special Eywa rituals and scenography of management and service
- Health & Longevity Concierge
- Daily Routine Concierge
- Eco-friendly transport service – in-home electric vehicles and yachts
- Personalized health and wellness recommendations and implementation, including food, supplements, and fitness solutions
- Private dining experiences

## WELL-BEING & LONGEVITY AMENITIES

- State-of-the-art Amenity Floor | 1.732 + sqm | 20+ premium features
- Most advanced longevity and biohacking tools
- Hydroponic Micro-Farms
- Eywa Private Wellth Membership Club





# EYWA HOLISTIC WELL-BEING LONGEVITY ECOSYSTEM

## ANCIENT KNOWLEDGE ABOUT HUMANS

- Implementation of ancient knowledge: Vastu Shastra, Ayurveda, Yoga
- Wellbeing energy crystal structure (18 tons of crystals and semi-precious stones)
- Influence on all six senses using the five elements of nature
- Landscaping strategy that combines the activation of the 9 planets and the use of healing plants

## MOST ADVANCED TECHNOLOGIES FOR YOUR HEALTH & WELL-BEING

- The finest craftsmanship and art by 22 world-leading brands
- Materials tested for safety: non-toxic and radiation-free
- Mold and fungi protection for the building
- EMF (Electromagnetic Fields) protection (the world's first residential building)
- Special activation of air: MERV 14 filtration system + ionization
- Robotic ventilation cleaning system
- Vortex Biotech's VLED air purification system
- Special activation of water: SOUND VIBRATION HARMONIZED LIVING WATER
- Air to water generators

## CERTIFICATIONS

- The highest level of sustainability – **LEED Platinum**
- The highest level of well-being – **WELL Platinum**
- The highest level of connectivity – **WiredScore Platinum**

The Holistic Ecosystem

# A HOME DESIGNED FOR LIFELONG WELL-BEING

Featuring EMFIS® Integration

A Complete Eywa Way of Water is the second building in the region to integrate EMFIS® — the most advanced low-EMF architectural system available today.

Developed through rigorous engineering, specialised shielding materials, and post-installation testing, EMFIS® significantly reduces occupants' exposure to electromagnetic fields, setting a new benchmark in wellness-driven design. All bedrooms are enveloped in EMF-shielded environments, complete with grounded electrical systems and low-radiation zones.

These spaces are intentionally designed to support restorative sleep, regulate circadian rhythms, and enhance mental clarity — introducing an unseen yet transformative layer of well-being into the home.





The Holistic Ecosystem

## BREATHING EASY MATTERS

We all want to feel good and stay healthy in our homes, and good air quality is a big part of that. Did you know that indoor air can be up to five times more polluted than outdoor air? Dust, pollen, bacteria, and viruses can quietly affect how we breathe, sleep, and feel every day.

That's why having MERV 14\* filters and air ionization makes such a difference — they work together to trap tiny particles and neutralize harmful germs, giving you cleaner, fresher air. It's like giving your lungs a gentle hug, helping you breathe easier, sleep better, and enjoy your space with confidence and peace of mind.

\* Minimum Efficiency Reporting Values, the higher the MERV rating the better the filter at trapping specific types of particles.

The Holistic Ecosystem

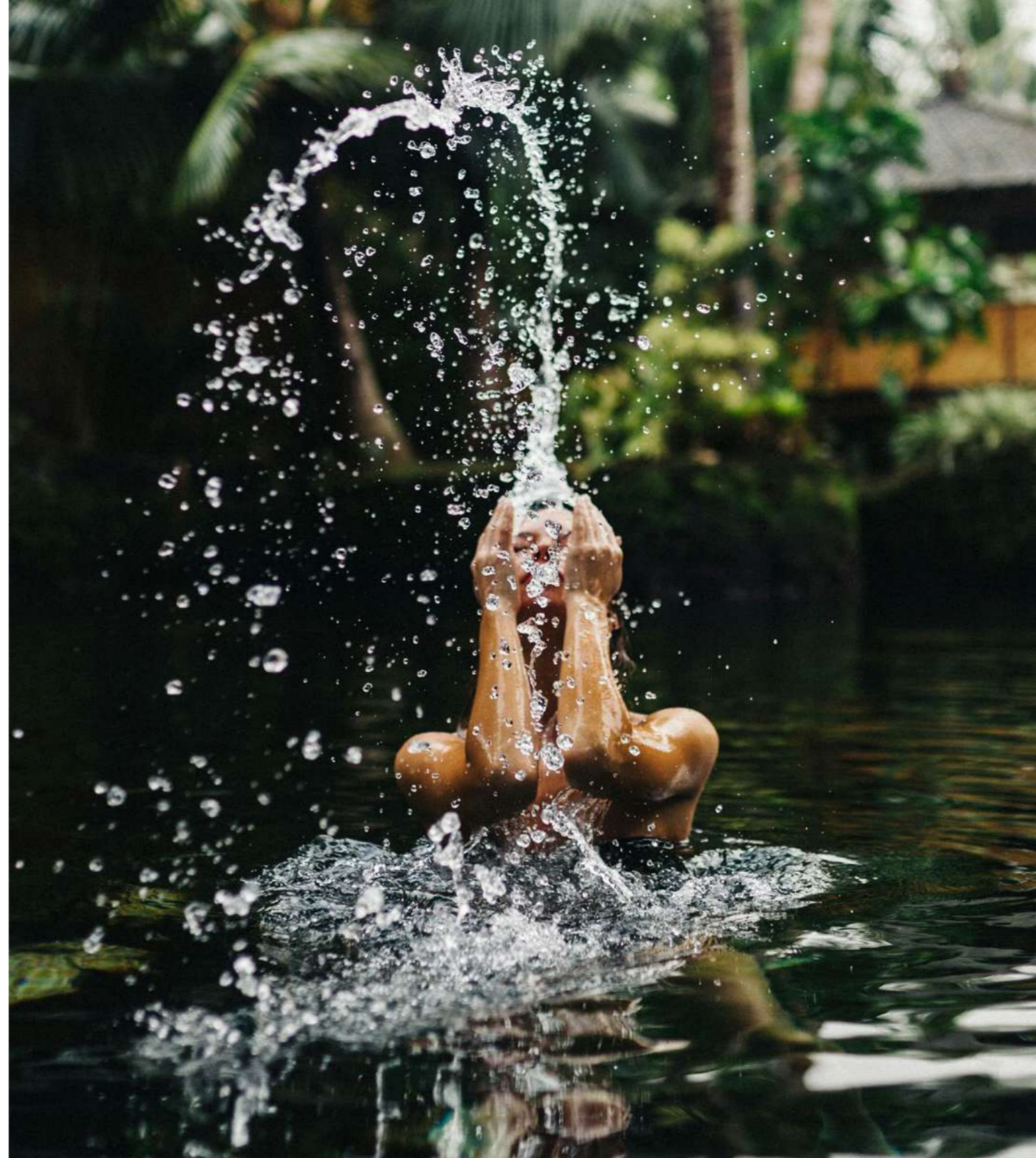
# SOUND VIBRATION HARMONISED LIVING WATER

## Water - The Essence of Life

Our body is like a symphony, with various resonant frequencies and interactions among cells and organs. Crystalline water serves as the backdrop for this conversation.

We transform tap water into liquid crystalline water, aligning it with the ideal frequency for bio-resonance with our cells.

In Eywa, every residence features pools, and the Amenity terrace boasts large pools and waterfalls, all filled with Alfa Omega water that continuously transmits beneficial frequencies and light. Whether you drink it, swim in it, or relax by a waterfall, Eywa ensures you benefit from these healing bio-resonance waves.





The Holistic Ecosystem

## VASTU SHASTRA

### The Ancient Science Of Harmonizing Space & Energy

Vastu Shastra is an ancient Indian science that balances positive energies in our environment to promote health, prosperity, and well-being. It aligns spaces with the nine planetary directions—north, south, east, west, and their diagonals—to channel beneficial energies.

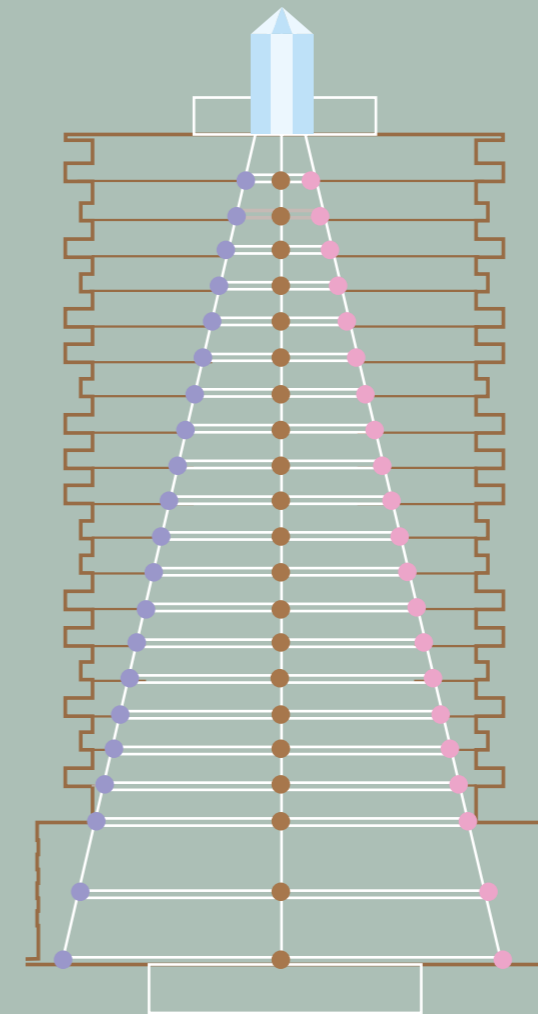
Eywa stands out as one of the few multi-storey buildings designed according to Vastu principles. Every detail, from entrance placement to water features, is crafted to harness cosmic forces, creating a microcosm that nurtures harmony and abundance.

Living in a Vastu-compliant space like Eywa means immersing yourself in an environment that supports health, mental clarity, and spiritual growth. It's a timeless approach to creating spaces that resonate with the universe's natural rhythms, promoting a balanced and prosperous life.

# WELL-BEING ENERGY CRYSTAL STRUCTURE

Specific crystals, geodes and precious stones are placed in columns and concrete slabs from the bottom to the top of the building in a unique pyramid shape in complete alignment with Vaastu Shastra principles.

These crystals and stones of varying natures and specific sizes enhance the positive energy on each floor while purifying and eliminating negative energy, promoting harmony, health and well-being for the residents of Eywa.



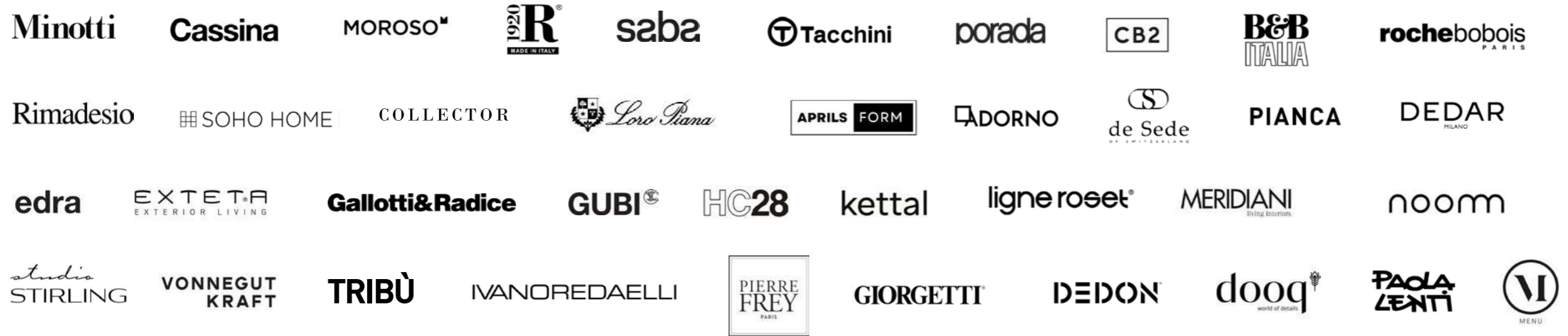
## Stones used:

- Moon Stone
- Aquamarine
- Green Jade
- Citrine & Clear Quartz.
- Malachite
- Sunstone (Orange)
- Rose Quartz
- Carnelian
- Red Jasper
- Tiger's Eye
- Black Tourmaline
- Lapis Lazuly
- Salenite (For Slabs)

# BRANDS & COLLABORATIONS

Experience the pinnacle of luxury living, where the finest craftsmanship and artistry are realized through collaborations with 22 of the world's leading brands.

## FURNITURE



## KITCHEN APPLIANCES



## RUGS



## IRONMONGERY



## GYM EQUIPMENT



## SANITARYWARE



## LIGHTING



## VENTILATION





BY

REAL ESTATE

R•EVOLUTION

DEVELOPER

+971 54 308 6000

[sales@byrevolution.com](mailto:sales@byrevolution.com)

EYWA . AE